



...T...Systems...



Copernicus Data and Exploitation Platform – Deutschland

Maritime Products

Date: 26.04.2018

Contents

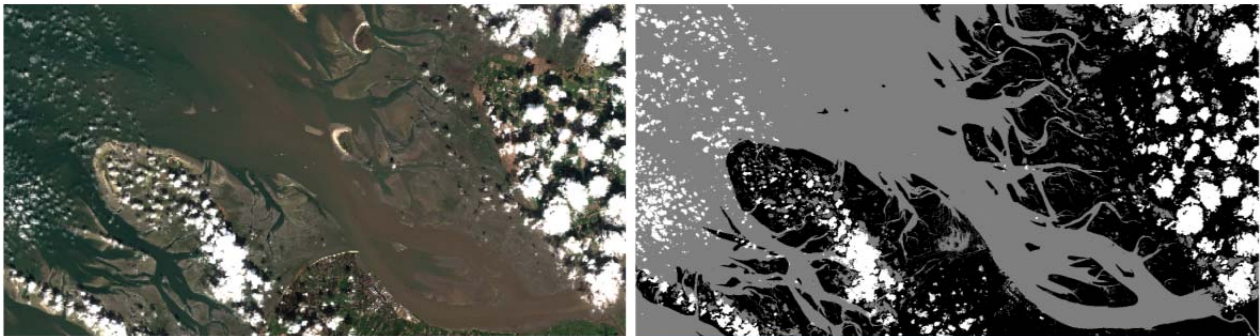
1.1	Introduction.....	2
1.2	Product Folder.....	3
1.3	Product Name	6
1.4	Product Format.....	6
1.5	Terms and Conditions	6

1.1 Introduction

CODE-DE provides maritime products with an EOMAP processor. Each such product is generated based on a Sentinel-2 Level 1C Product, which is available via CODE-DE, too.

This product contains the atmospherically corrected water albedo product of a Sentinel-2 Level 1C scene. A water-land-cloud mask based on analysis of the atmospherically corrected scene on water, land and cloud specific spectral properties is also delivered.

The albedo product (`_ALB_`) consists of the Sentinel-2 Level 1C bands 1, 2, 3, 4, 5, 6, 7, 8, 8a, 11, and 12 at 10 m spatial resolution, where a change of 1 digit is equivalent to a change of 0.0001 (0.01 %) in reflectance. The mask product (`_MSK_`) has 10 m spatial resolution with values 0 (land), 1 (water), and 2 (cloud).



Left side: Atmospheric corrected data (RGB); Right side: Land-Water-Cloud (black-grey-white)

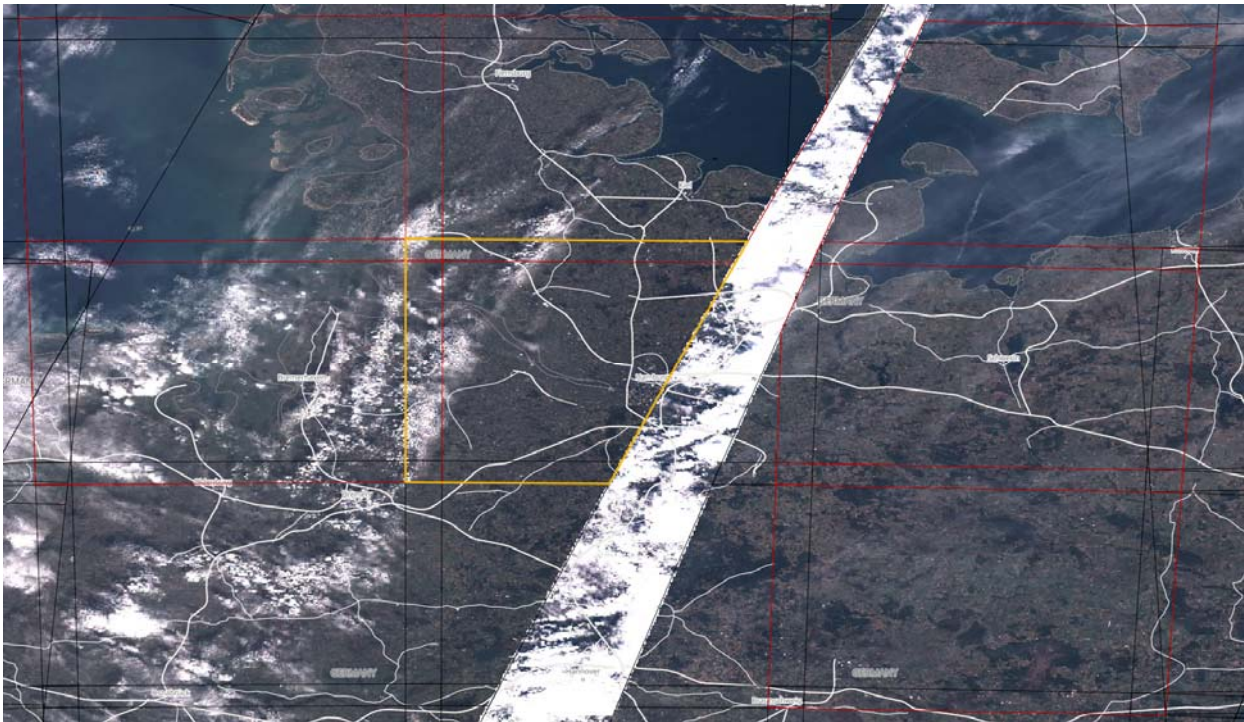
1.2 Product Folder

Maritime products of the following UTM tiles will be made available.

Area of Hamburg, Germany,

- 32UME
- 32UMF
- 32UNE
- 32UNF
- 32UPD
- 32UPE
- 32UPF

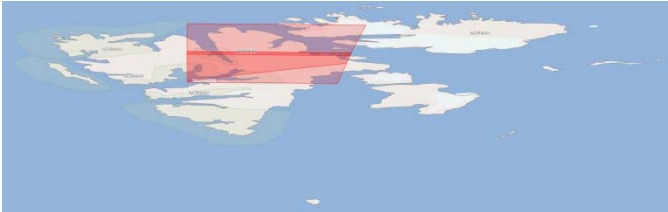
as illustrated in the following figure (marked red).



Area of Svalbard, Norway,

- 33XWH
- 33XWJ

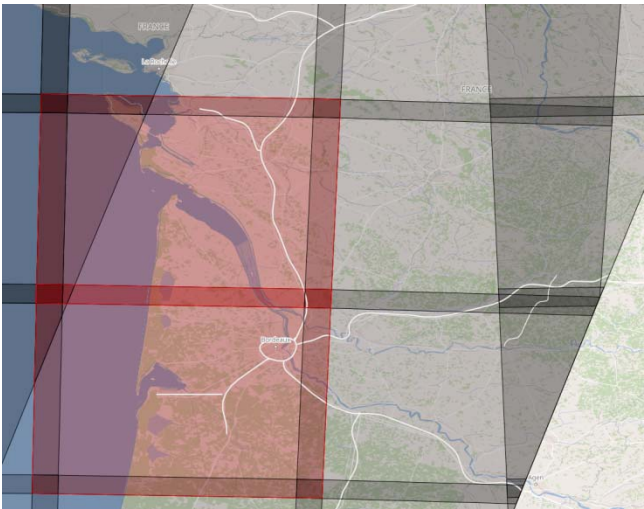
as illustrated in the following figure (marked red).



Area of Bordeaux, France,

- 30TXQ
- 30TXR

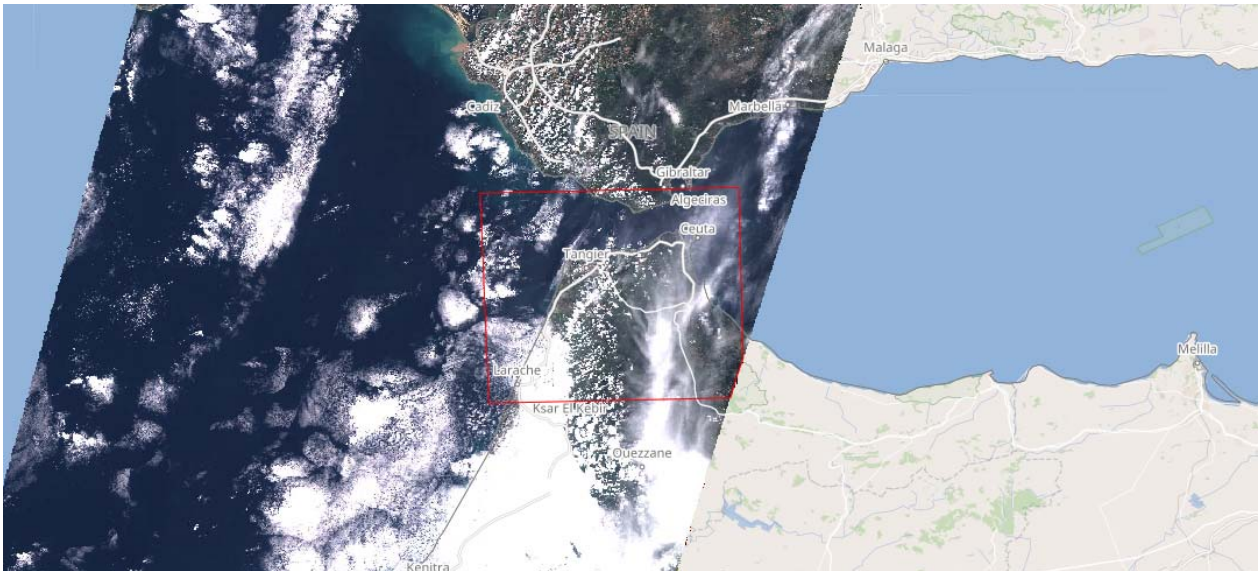
as illustrated in the following figure (marked red).



Area of Gibraltar, France,

- 30STE

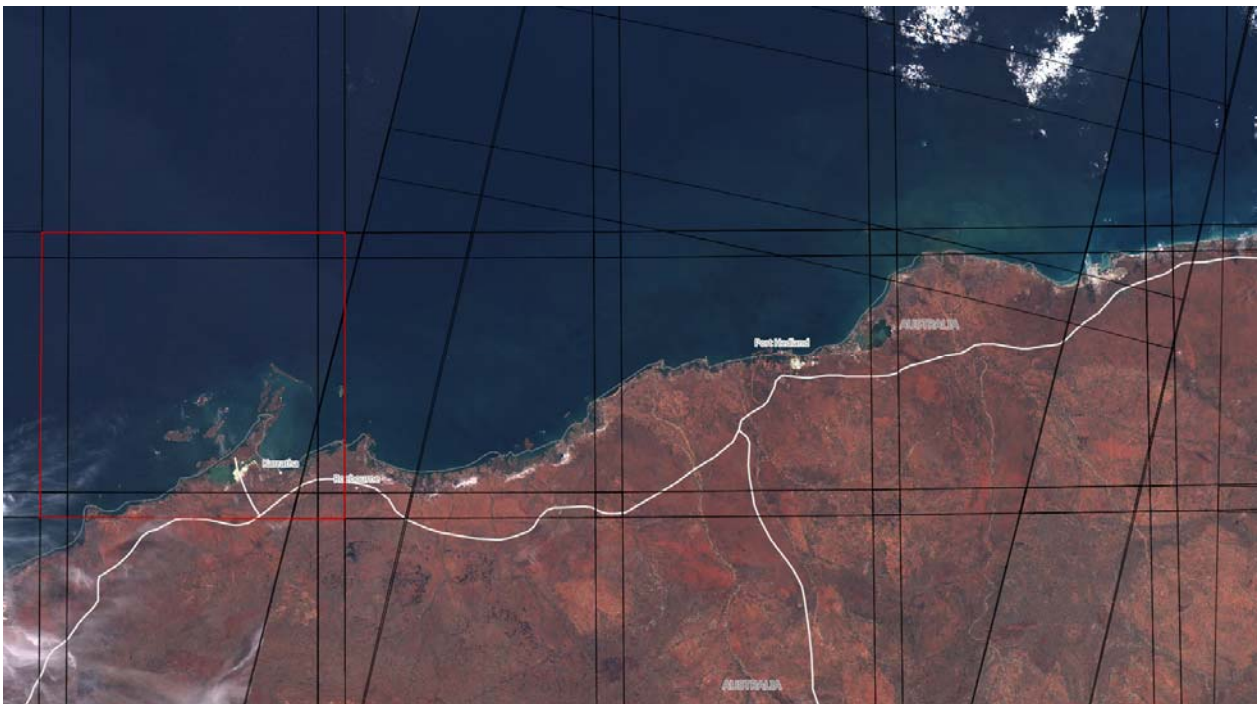
as illustrated in the following figure (marked red).



Area of Karratha, Australia,

- 50KMC

as illustrated in the following figure (marked red).



For each Sentinel-2 Level 1C Product sensed after 1st January 2018 and covering one of these UTM tiles a maritime product is generated. The maritime product folder is <SENSING_YEAR>/<UTM_TILE>.

1.3 Product Name

The maritime product name is S2<A/B>_EOMAP_<SENSING_TIME>_N<VERSION>_R<RELATIVE_ORBIT>_T<UTM_TILE>_<PROCESSING_TIME>.ZIP.

1.4 Product Format

The maritime product format consists of five files.

Two files for the Albedo product (see Introduction) in ENVI BIL:

S2<A/B>_ALB_<SENSING_TIME>_N<VERSION>_R<RELATIVE_ORBIT>_T<UTM_TILE>_<PROCESSING_TIME>

S2<A/B>_ALB_<SENSING_TIME>_N<VERSION>_R<RELATIVE_ORBIT>_T<UTM_TILE>_<PROCESSING_TIME>.hdr

Two files for the Mask product (see Introduction) in ENVI BIL:

S2<A/B>_MSK_<SENSING_TIME>_N<VERSION>_R<RELATIVE_ORBIT>_T<UTM_TILE>_<PROCESSING_TIME>

S2<A/B>_MSK_<SENSING_TIME>_N<VERSION>_R<RELATIVE_ORBIT>_T<UTM_TILE>_<PROCESSING_TIME>.hdr

One file as quicklook in GeoTIFF:

S2<A/B>_RGB_<SENSING_TIME>_N<VERSION>_R<RELATIVE_ORBIT>_T<UTM_TILE>_<PROCESSING_TIME>.tif

1.5 Terms and Conditions

The same terms and conditions as for Sentinel-2 Level 1C Products apply.